

# Nichols Design Associates, Inc.

Robert A. Nichols, Assoc.AIA  
Principal Designer

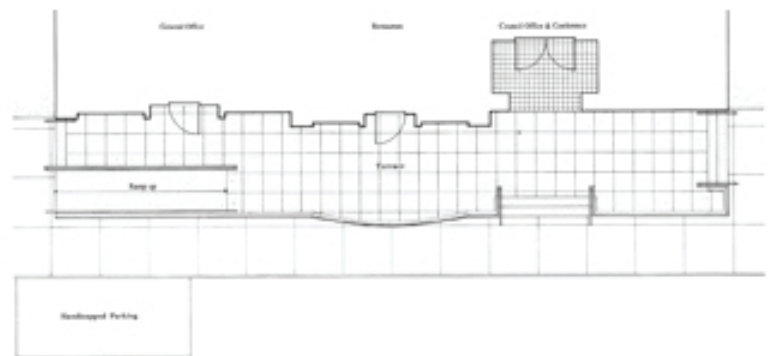
**Project:**  
Hopedale Town Ramp Renovation  
Hopedale, MA

**Date of Completion:**  
1990

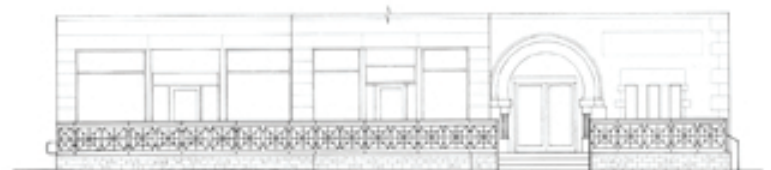
**Cost of Construction:**  
\$36,000.00

**Description:**  
The renovation of the ramp to the main entrance to the Hopedale Town Hall was designed to sensitively provide access for persons with disabilities by perserving the character of the historic Richardsonian Romanesque structure. Nichols Design Associates, Inc. was awarded from The National Endowment for the Arts and National Building Museum for Excellence in Universal Design in 1996. They also won an award from the Massachusetts Architectural Access Board for the Commendation Award in 2005.

Historic Photo  
Built in 1898



GROUND PLAN



BUILDING ELEVATION

HOPEDALE TOWN HALL RAMP RENOVATION

SCALE 1/4" = 1'-0"

**Nichols Design Associates, Inc.**  
2934 Fessenden Street, NW  
Washington, DC 20008

[www.nicholsdesign.net](http://www.nicholsdesign.net)  
202.540.8889 T.  
202.237.8908 F.  
[robertnichols2@verizon.net](mailto:robertnichols2@verizon.net)



Ramp to general office, restaurant and council meeting and conference doors.